

Manual Application Instructions for PondPro 2000



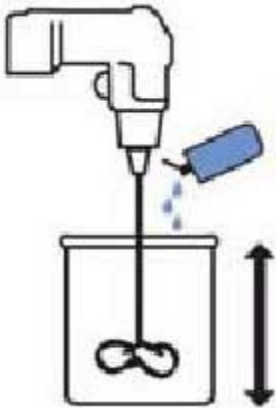
Surface preparation

Your pond surface needs to be clean, dry and structurally sound. We suggest not using any detergents in your pond. A soft bristle brush and water is all that is needed. You want the surface to be clean of any dirt that will be picked up with the nap of the roller or in the paintbrush used during the application process. Avoid cleaners and detergents since any remaining residue may harm your fish or plants. Only if your pond does not have plants or fish should you consider using cleaning solutions. On an epdm liner that has not been coated with other coatings it is simply a one coat application of PondPro2000. For ponds that have been coated with a 3rd party coating you will need to apply first the ProFlex primer followed by the PondPro. Any loose caulking needs to first be removed and replaced with the Rubex caulk on our order form. Any oil or wax must be completely removed with solvent (mineral spirits). Remove loose portions of existing coatings with a scraper and wire brush. Whatever coatings still have good adhesion may remain and coated with the ProFlex Primer. Rusty or pitted metal should be wire brushed to remove loose oxide. Tightly adhering corrosion may be directly coated with PondPro 2000®.

Coverage:

PondPro 2000® coverage on a smooth surface is 50 sq. ft. per individual gallon. Each unit of PondPro 2000® comes with its own pre-measured bottle of catalyst, the activator that starts the curing process. You only want to mix what you can apply in an hour as once the catalyst is added you have an hour pot life to apply the material. Normal application rate is a 20 mil thickness which equates to about five individual pieces of paper. Please wait a full 24 hours before filling the pond. Any unmixed material that you do not need can be store for up to three years. If you need assistance calculating the coverage you can give our office a call toll free at: **855-788-5836**

How to Mix PondPro 2000



For PondPro 2000® you may notice once you open the container there is adequate space to add the bottle of catalyst and mix the material in the same can. You will need a drill, and a gallon mixer attachment for this. Each bottle of catalyst is contained in the gallon box. When mixing you want to be sure that the drill is creating a vortex and that the material is mixed for a good 4-5 minutes. During the mixing you also want to bring the drill up and down and also in a circular motion so that the material is all distributed uniformly.

The Application Process

The most effective method of application is by a combination of brush, roller or squeegee. After mixing pour out the material in a figure "S" pattern on large flat surfaces of you pond and first distribute the material with a squeegee. When you notice the squeegee is not bringing any more of the material back in the rubber of the squeegee you then go back over the area you squeegeed with the 3/8 inch roller. For smaller ponds and verticals a paintbrush is the appropriate method.



The Curing Process

One of the unique benefits of **PondPro 2000®** vs. other pond sealers on the market is that it cures by adding a unique catalyst to the quart or gallon can. During the curing process there is a very unique cross-linking that occurs and the PondPro literally chemically bonds itself to the surface leaving no air trapped within the pond substrate and the PondPro. This is why PondPro is the only pond product you ever need to purchase to fix your leak once! Please allow a full 24 hours of temperatures of 32 degrees or above before you fill your pond with water. If the temperature goes below 32 degrees just add that lost time to your overall cure time. PondPro2000® can tolerate extreme temperatures as low as forty degrees below zero and waterproofs immediately after it has been applied. So regardless of the area of the country you are in there is never a need to worry about the product cracking. Sunlight UV and humid will have no effect on the material.

How to Mix ProFlex Primer-

Note ProFlex is only required when another 3rd party coating was applied over the original pond substrate. ProFlex Primer is a two component, ready to apply, flexible epoxy primer with a one to one volume mix ratio. ProFlex must not be tacky when applying PondPro. Should you press down on the ProFlex and determine it is still tacky you need to wait before applying the PondPro. Generally this condition occurs 24 hours after the ProFlex has been applied. You also want to apply the ProFlex on a day with rain is not expected as it cannot rain on the ProFlex. The day which you apply the ProFlex primer needs to be above 50 degrees. Lower temperatures at night will slow the cure but will not affect the product. Do not apply ProFlex if you anticipate freezing temperatures BEFORE you are able to apply the PondPro 2000