



Stop Pond & Fountain leaks **GUARANTEED!**

One coat Application. No Primer Needed!

Do your water levels keep dropping? With a 25 year history of success our liquid EPDM Pond Pro 2000 is your answer. Since it's a liquid it can conform to any shape or protrusion. Pond Pro is a liquid version of EPDM exactly that of existing EPDM pond liners sold in pond supply stores.

What makes Pond Pro the choice of so many customers and pond repair businesses?

- No messy glues or tapes
- Backed by the best warranty we know in the industry!
 - One Coat application. No Primer needed
 - Easy Application- A true do-it-yourself product
 - Waterproofs immediately upon application
- It has proven itself superior to Acrylics, Urethanes and other elastomers for up to 3 times longer
 - Safe for fish and plant life



Pond Pro 2000

TESTIMONIALS

I am sorry I am reaching out to you so late after using your product! I never did take any good footage of applying the EPDM liner due to a rushed job but have told many other companies about the product and will stand behind it one hundred percent. It worked great for our application and was easy to use. Once again I am sorry for not getting any footage but I hope to continue to use your product in the future. Thank you,

*Donnie Harrington, Director of Fish and Invertebrates
Mystic Aquarium & Institute For Exploration*

As a professional pond installer I personally test each product that we use or recommend to our customers. I tested Pond Pro 2000 on two different ponds, the first was a small tear in an EPDM liner pond & the second was around a pipe connection through a perform pond that kept leaking. The Pond Pro 2000 worked great for both! I will use Pond Pro 2000 when doing repairs & recommend it to my customers! I can't wait to use it on a larger application.

Dave Burns, Backyard Getaway, Florida

Hi guys for starters wow great product. I need to cover a 230 sq ft koi pond. A leak that we were about to give up with and just tear out the whole liner. I don't have to tell you a nightmare that is. A bit skeptical I have to say at first but the results really speak for themselves. The product did just what it said it would save me money time and just overall convenience. The Pond Pro is really thick I guess that is why only one coat is needed. Since I ordered the product I completed two additional projects not as large but both satisfied customers

Brett Johansen, Water Garden creations

Well it has been 7 months since we first started using Pond Pro. We started out with my personal pond in our back showroom. It passed my test and that is a hard thing to do. December 2010 and about 14 projects later I can tell you without a doubt we will only be using your product for our projects. We were very impressed with its ease of use and the fact that it is a liquid EPDM and identical to the EPDM liners out there took out our worry with adhesion concerns.

Steve Schwartz, Waterfall Design LLC



Pond Pro 2000

Pond Pro is liquid EPDM very similar to EPDM pond liners sold in pond supply stores. It works extremely well on all non-porous concrete fountains as well as EPDM fishponds liners. Reflecting pools are another good application for EPDM. These are demanding applications where the unique properties of EPDM have a distinct advantage over other products. The success of Pond Pro 2000 is through combining ethylene and propylene with a diene monomer. Pond Pro 2000 is safe for fish and plant life as well as chlorinated water. It is resistant to oxidation and UV degradation but its most important property is its ability to tolerate both low as well as high temperatures (from minus 62 to plus 350 degrees Fahrenheit).



Pond Pro 2000

494 Bridgeport Ave,
Suite 101 PMB 342,
Shelton Ct 06484

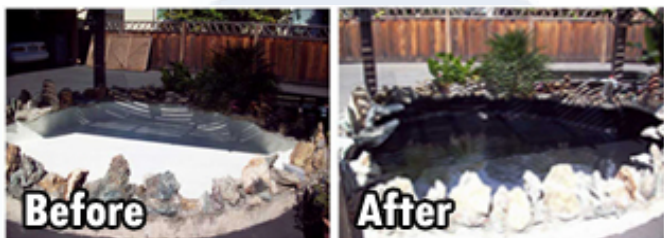
info@pondpro2000.com

<http://www.pondpro2000.com>

MADE IN USA

Uses For PondPro

- PVC Liners
- EPDM Liners/Membrane
- Fiberglass Liners
- Vinly Liners
- Pools
- Concrete Fountains
- Concrete Ponds
- Weatherized Steel
- Cast Concrete Foundations
- Urethane Foam



Where can Pond Pro 2000 be used to its best advantage?

The unique combination of properties which Pond Pro 2000 possesses can be best utilized when they are applied to the exterior surfaces of stationary structures. Examples are:

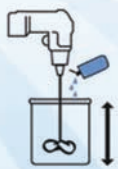
Ponds and Fountains	Concrete fishponds and reflecting pools are another good application for EPDM. These are demanding applications where the unique properties of EPDM have a distinct advantage over other products
Air Conditioning drop pans	Excellent moisture barrier and rust inhibitor
Concrete Tanks	The excellent water proofing properties of EPDM will reduce or prevent spilling of the concrete in cold climates
Corrosive/Humid Environments	Exposed structural steel on the interior of industrial buildings with humid or corrosive environments can be coated with minimal surface preparation. Plating operations, smelters, concrete casting operations, dye works and paper mills are just a few examples. High-density poultry and hog production operations are another good use to protect steel from the corrosive environment produce by manure
Impoundments	Liquid EPDM coatings are a good choice for exterior spill containment structures because of their excellent weathering and broad chemical resistance properties



INSTRUCTIONS:

With an electric drill slowly add catalyst into the vortex. DO NOT pour catalyst on top of Pondpro prior to starting mixer. After all the catalyst has been added, the paddle/mixer should be moved in a circular fashion around the can as well as up and down for 2 minutes to insure that the catalyst is uniformly mixed. Periodically scrape the sides with a rubber or metal spatula to incorporate the stagnant layer of material adhering to walls of pail.

Consult your PondPro representative for proper mixing and surface preparation. Be sure you wear gloves during the application. Surface temperature must be above 32 degrees for drying to take place. Once dry wash down the product with water and a soft brush or sponge to remove any residue and before filling your pond.



APPLICATION:

Brush, roller or squeegee. A combination of methods might be most effective. For example, on a flat surface, pour a serpentine bead of material from pail, distribute roller brush or squeegee. On larger areas finish with a short nap roller to press air out of cracks and even out wet film.